

Run setup with administrator privileges for Windows Vista Users

Follow these steps to create a shortcut to **cmd.exe** and run an installation as an administrator in Windows Vista.

1. Copy **cmd.exe** from **c:\Windows\system32**.
2. Paste as a shortcut to your desktop.
3. Right-click the CMD icon, click **Properties**, select the **Shortcut** tab and click **Advanced**.

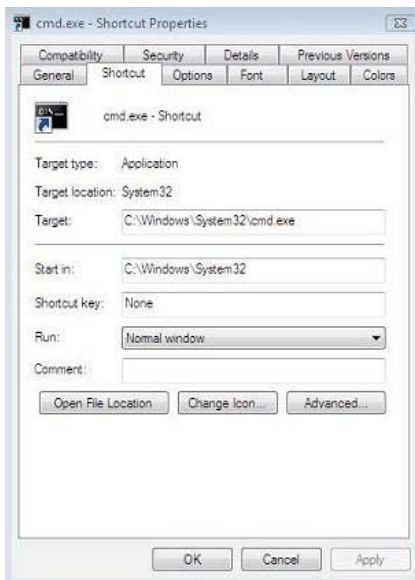


Figure 19

4. Select **Run as administrator** and click **OK**.



Figure 20

5. Double click on the shortcut to launch cmd.exe as administrator.

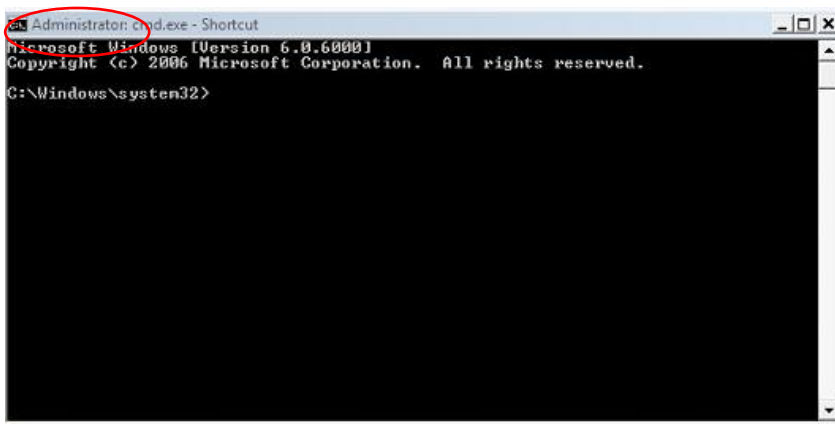


Figure 21

6. Paste the command line: **msiexec /i <path-to-msi>** and hit **Enter**.

Example: `msiexec /i "D:\TaxPartner\TaxPartner.msi"`